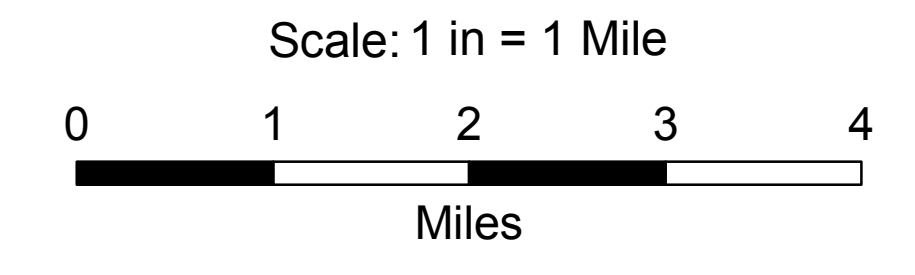
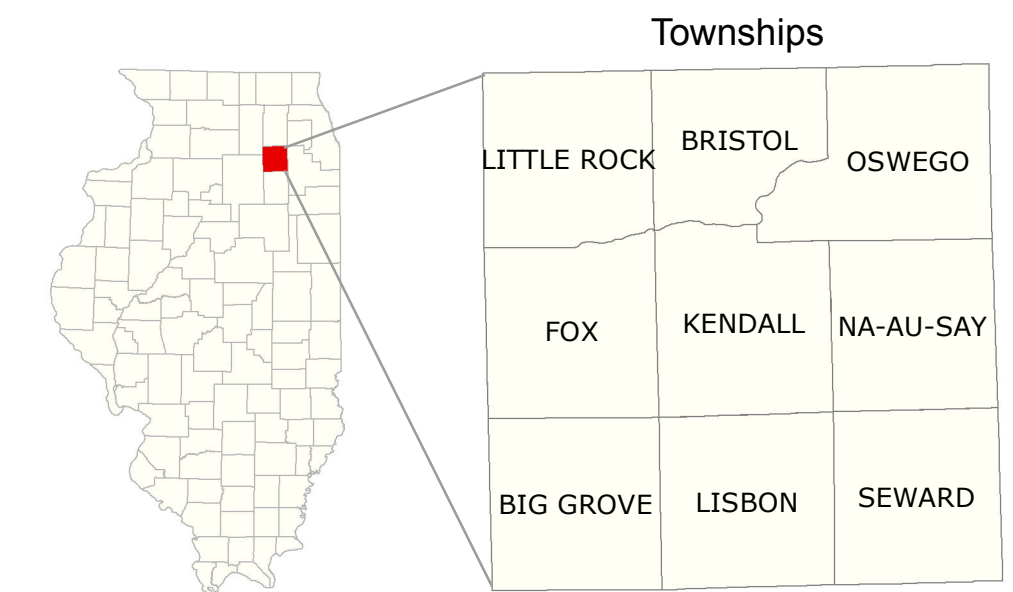


DRAINAGE DISTRICTS

KENDALL COUNTY

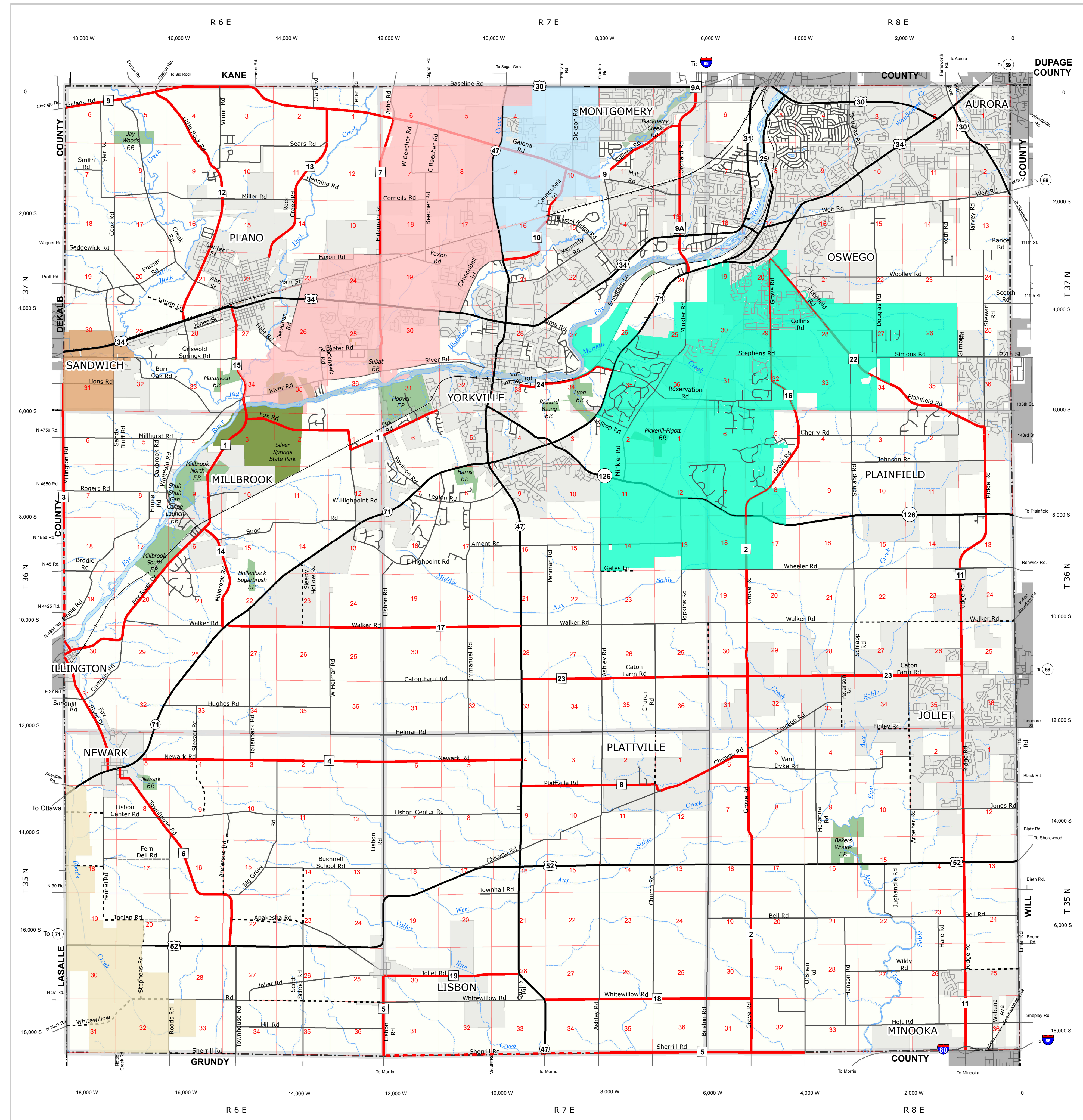
- 2014 -

<http://www.co.kendall.il.us>



Legend

- ADJACENT COUNTY
- COUNTY
- INTERSTATE
- STATE
- FEDERAL
- BITUMINOUS
- GRAVEL
- DIRT
- LOCAL
- RAILROAD
- SECTIONS
- POLITICAL TOWNSHIPS
- COUNTY FOREST PRESERVE
- STATE PARK
- Northville Drainage District
- Big Slough Drainage District
- Rob Roy Drainage District
- Raymond Drainage District
- Morgan Creek Drainage District
- Corporate
- Corporate



Kendall County GIS
 111 West Fox Street - Room 308
 Yorkville, Illinois 60560-1498
 630.553.4030

Compiled using data through 12/31/2013