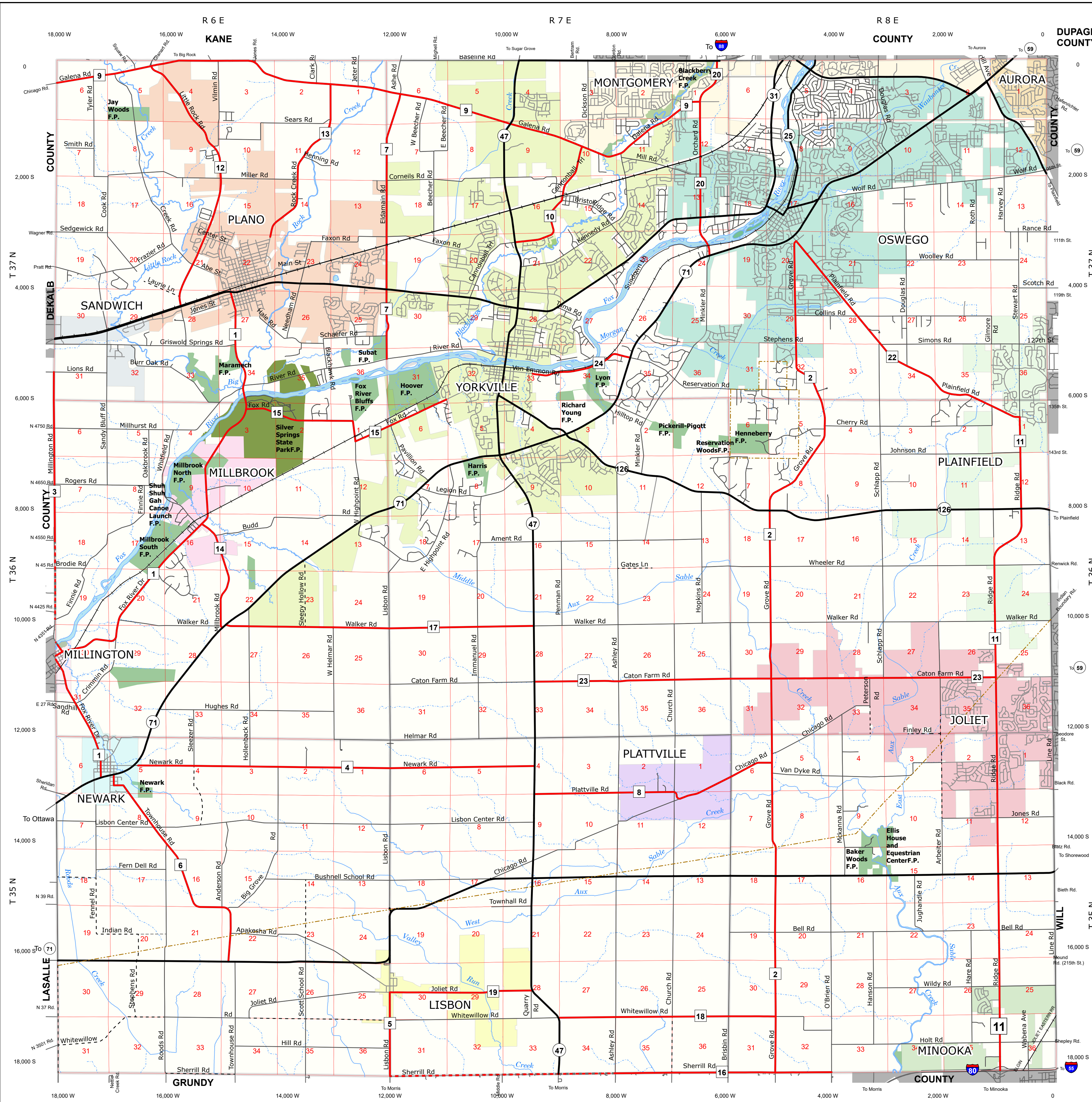
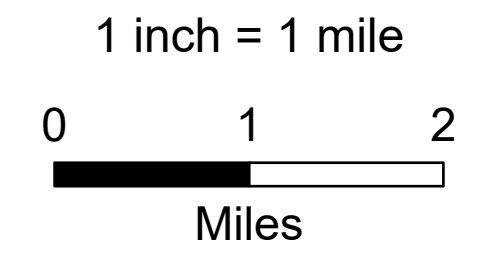
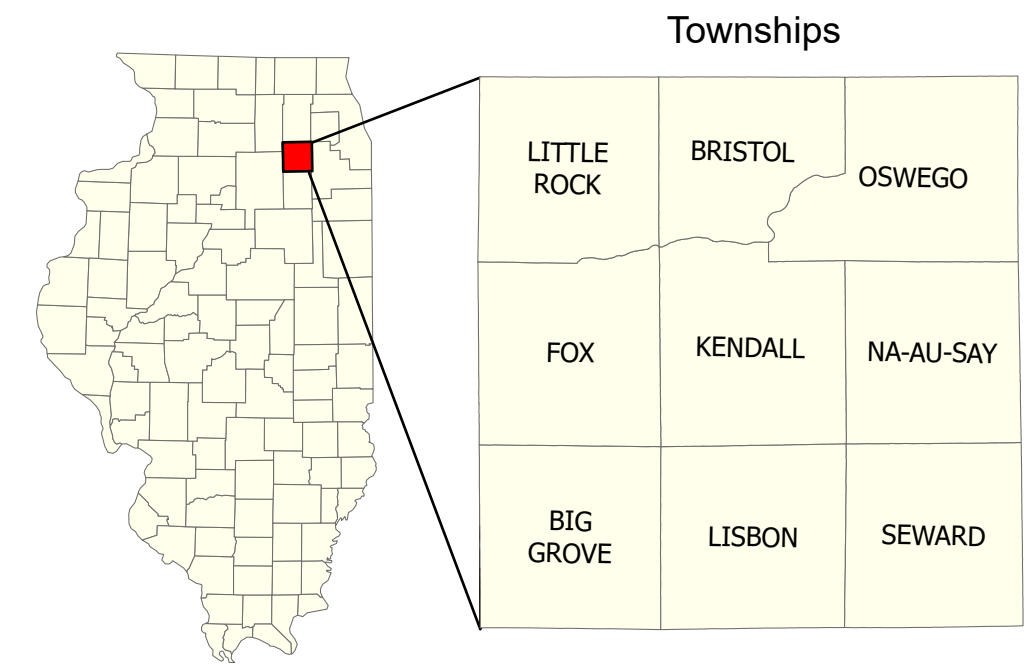


HIGHWAY MAP KENDALL COUNTY - 2020 -

<http://www.co.kendall.il.us>



- Adjacent County
 - County
 - Interstate
 - State & Federal
 - Bituminous
 - Gravel
 - Dirt
 - Local
 - PLSS Sections
 - Political Townships
 - State Park
 - County Forest Preserve
- Aurora
 - Joliet
 - Lisbon
 - Millbrook
 - Millington
 - Minooka
 - Montgomery
 - Newark
 - Oswego
 - Plainfield
 - Plano
 - Plattville
 - Sandwich
 - Yorkville

Published by:
Kendall County Highway Department
Francis C. Klaas, P.E.
County Engineer
Department Headquarters
6780 Route 47
Yorkville, IL 60560
Phone (630) 553-7616
FAX (630) 553-9583

Kendall County GIS
111 West Fox Street - Room 308
Yorkville, Illinois 60560
630.553.4212

NOTE: The Rural Roads Identification System employs a numbering system based on a grid-mile coordinate system. The mileage is measured from the northeast corner of County. Each grid section west and south of that corner receives a 1000 number added consecutively across the County. Intermediate intersections would be proportionate parts of 1000.