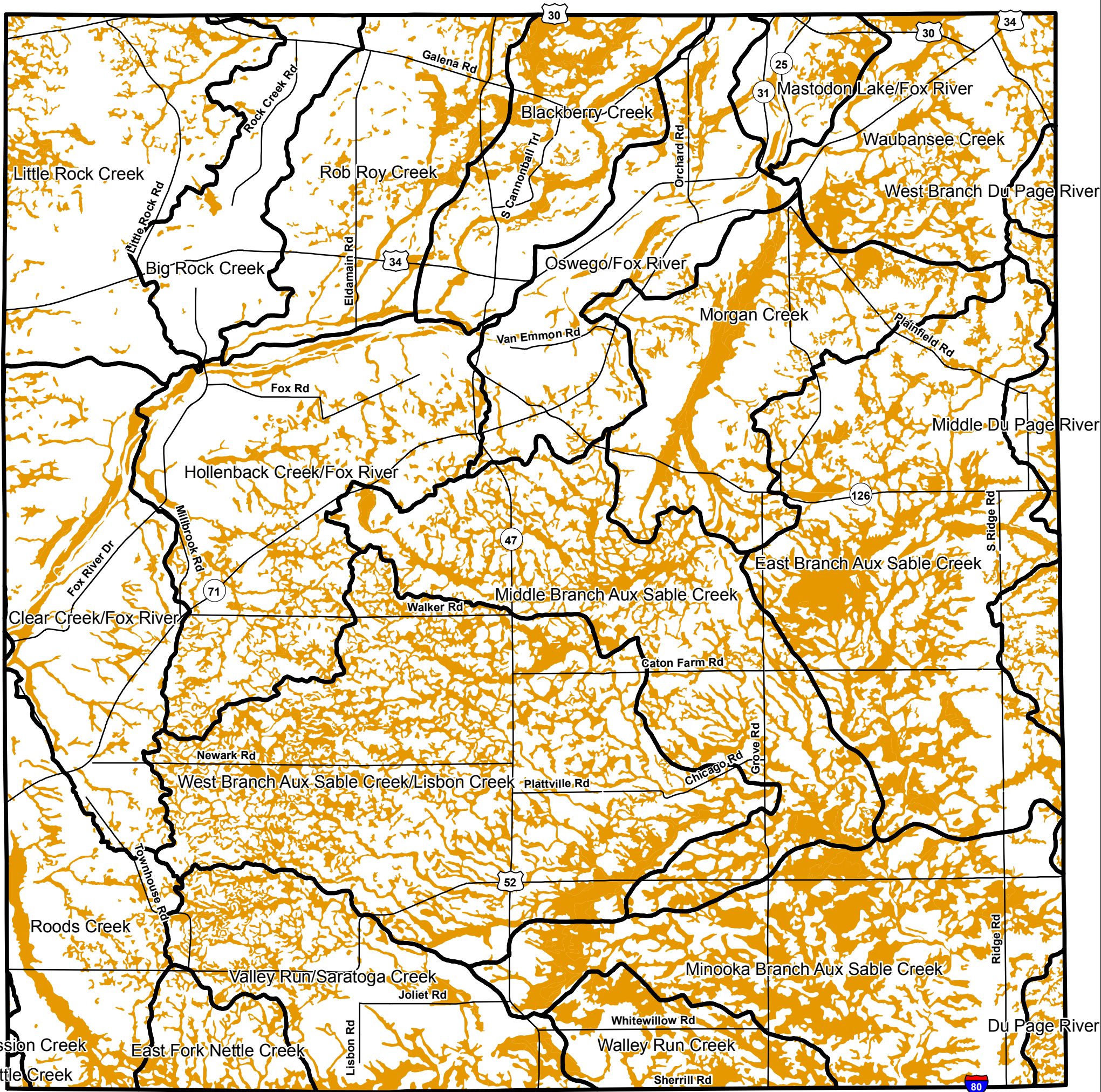


# Kendall County Hydric Soils

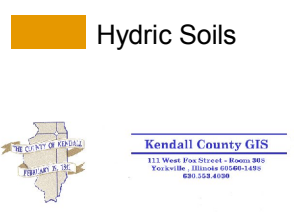
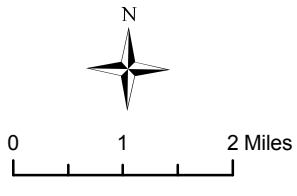


**Total Area of Hydric Soils per Sub Watershed (in Acres)**

SUB WATERSHED	Valley Run/Saratoga Creek	Walley Run	W Br DuPage River	W Br Aux Sable Creek	Roods Creek	Rob Roy Creek	Oswego Fox River	Nettle Creek	Morgan Creek	Mission Creek	Minooka Br Aux Sable Creek	Mid DuPage River
Totals (Ac)	3106	1834	177	9629	1926	1946	1493	17	3444	7	7450	862
% of Total	32.28	45.22	26.07	38.25	23.45	19.49	14.99	15.32	30.03	7.37	45.39	28.31

SUB WATERSHED	Mid Br Aux Sable Creek	Mastodon Lake Fox River	Little Rock Creek	Hollenback Creek Fox River	E Fork Nettle Creek	E Br Aux Sable Creek	DuPage River	Clear Creek Fox River	Blackberry Creek	Waubensee Creek	Big Rock Creek
Totals (Ac)	6128	706	1610	3555	864	7770	332	2050	2556	2926	201
% of Total	37.37	25.85	13.04	22.44	31.93	36.41	37.05	17.00	31.56	32.15	3.38



Data for soils and hydric soils retrieved from United States Department of Agriculture - Natural Resources Conservation Service