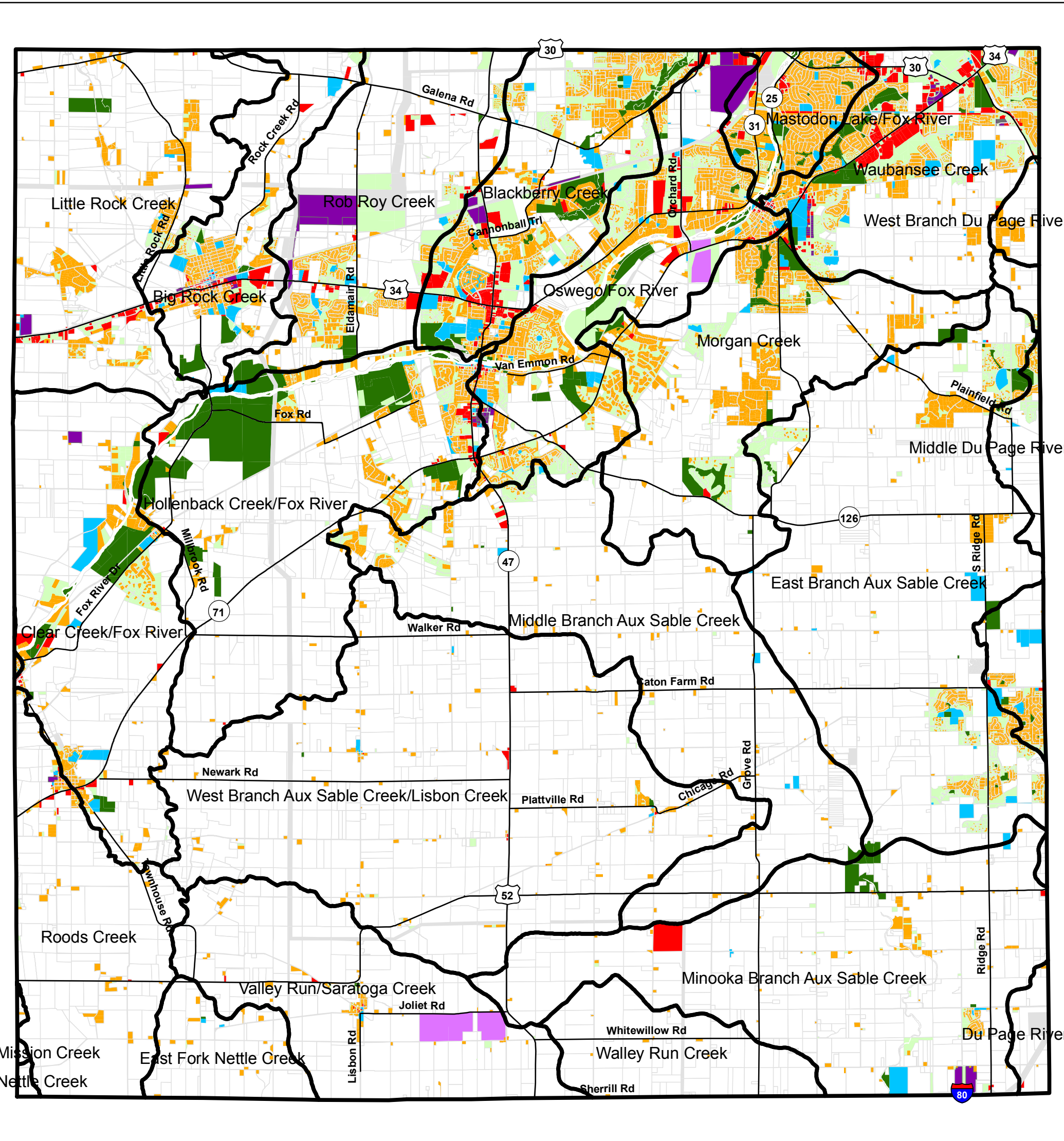


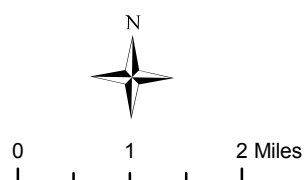
Kendall County Land Use



Land Use per Sub Watershed (%)

	Valley Run/Saratoga Creek	Walley Creek	W Br DuPage River	W Br AuxSable Creek	Roods Creek	Rob Roy Creek	Oswego Fox River	Nettle Creek	Morgan Creek	Mission Creek	Minooka Br Aux Sable Creek	Mid DuPage River
Ag	92.34	98.52	77.46	97.19	96.14	66.44	37.44	100.00	73.50	94.44	93.27	73.59
Commercial	0.11	0.00	0.30	0.11	0.31	2.13	3.59	0.00	0.29	0.00	1.04	0.25
Industrial	0.00	0.00	0.00	0.00	0.10	3.85	3.61	0.00	0.00	0.00	0.53	0.00
Institutional	0.10	0.00	0.15	0.08	0.09	0.95	1.82	0.00	0.41	0.00	0.77	4.43
Mining	4.28	0.00	0.00	0.00	0.00	0.00	1.61	0.00	0.00	0.00	0.01	0.00
Open Public Space	0.04	0.00	0.00	0.03	0.05	1.86	4.49	0.00	3.99	0.00	1.20	3.62
Residential	1.51	0.43	21.33	1.32	2.88	7.21	25.79	0.00	14.02	5.56	1.81	12.16
Trans/Commun/Util	1.40	1.06	0.00	1.10	0.00	7.50	1.39	0.00	0.08	0.00	0.45	0.00
Vacant	0.22	0.00	0.76	0.17	0.43	10.05	20.28	0.00	7.71	0.00	0.93	5.96

	Mid Br Aux Sable Creek	Mastodon Lake FoxRiver	Hollenback Creek	E Fork Nettle Creek	E Br AuxSable Creek	DuPage River	Clear Creek FoxRiver	Blackberry Creek	Waubensee Creek	Big Rock Creek	County Totals
Ag	94.38	1.54	86.04	73.14	96.86	87.26	81.96	81.11	31.71	45.79	79.68
Commercial	0.18	5.42	0.89	0.71	0.00	0.00	0.35	0.84	5.50	7.91	1.26
Industrial	0.00	4.91	0.55	0.13	0.00	0.00	0.00	0.27	1.08	0.92	0.59
Institutional	0.34	5.05	0.17	0.65	0.23	1.46	0.00	2.36	5.49	4.11	1.20
Mining	0.00	0.00	0.00	0.00	0.00	0.00	0.00	0.00	0.00	0.00	0.28
Open Public Space	0.20	6.31	1.02	12.85	0.08	1.18	0.00	4.26	7.57	5.41	2.76
Residential	2.63	60.23	7.79	6.83	2.54	4.94	1.05	6.58	25.16	18.00	7.82
Trans/Commun/Util	0.31	6.87	1.29	2.42	0.23	0.14	16.30	0.56	2.49	0.63	1.35
Vacant	1.95	9.67	2.25	3.26	0.08	5.01	0.35	4.02	21.00	17.22	5.06



- Ag
- Commercial
- Industrial
- Residential
- Institutional
- Mining
- Open Public Space
- Trans/Commun/Util
- Vacant